

# Advancement Placement (AP) Courses Enrollment Approval Policy

HSI-Sugar Land | 2021-2022

Test Data	Grade Level	AP Courses #	PSAT AP Potential	Notes
PSAT 8/9 (8th Grade)	9 <sup>th</sup> Grade (PSAT 8/9)	More than 2 AP >>	Over 90%	
		2 AP >>>>>>>>>>	Over 80%	
		1 AP >>>>>>>>>>	Over 70%	
		AP Committee >>	Below 60% =>>>>>	Min. Requirement: PSAT Total Score of 950.
PSAT 8/9 (9th Grade)	10 <sup>th</sup> Grade (PSAT 8/9)	More than 3 AP >>	Over 90%	
		3 AP >>>>>>>>>>	Over 80%	
		1 or 2 AP >>>>>>>	Over 70%	
		AP Committee >>	Below 60% =>>>>>	Min. Requirement: PSAT Total Score of 1000.
PSAT/NMSQT (10th Grade)	11 <sup>th</sup> Grade (PSAT/NMSQT)	More than 4 AP >>	Over 90%	
		4 AP >>>>>>>>>>	Over 80%	
		3 AP >>>>>>>>>>	Over 70%	
		1 or 2 AP >>>>>>>	Over 60% =>>>>>	
		AP Committee >>	Below 60% =>>>>>	Min. Requirement: PSAT Total Score of 1000.
PSAT/NMSQT (11th Grade)	12 <sup>th</sup> Grade (PSAT/NMSQT)	More than 4 AP >>	Over 90%	
		4 AP >>>>>>>>>>	Over 80%	
		3 AP >>>>>>>>>>	Over 70%	
		1 or 2 AP >>>>>>>	Over 60% =>>>>>	
		AP Committee >>	Below 60% =>>>>>	Min. Requirement: PSAT Total Score of 1000.

\*In order of a student to take advanced placement courses including AP & Dual Credit courses, she/he **MUST** have passing scores on TSI testing.

# Advancement Placement (AP) Courses

# Enrollment Approval Policy

HSI-Sugar Land | 2021-2022

## Advanced Placement (AP®) Program

### Phase 1: Exploration, Registration, and Approval Process

When approving AP course registrations, the following 2 factors should be considered:

- Number of concurrent college level courses - gradual increase
- PSAT™ 8/9, PSAT™ 10, or SAT® Scores - AP® Potential

The following table summarizes AP Potential-PSAT and number of concurrent AP enrollments by grade level. AP Language course enrollments are exempt.

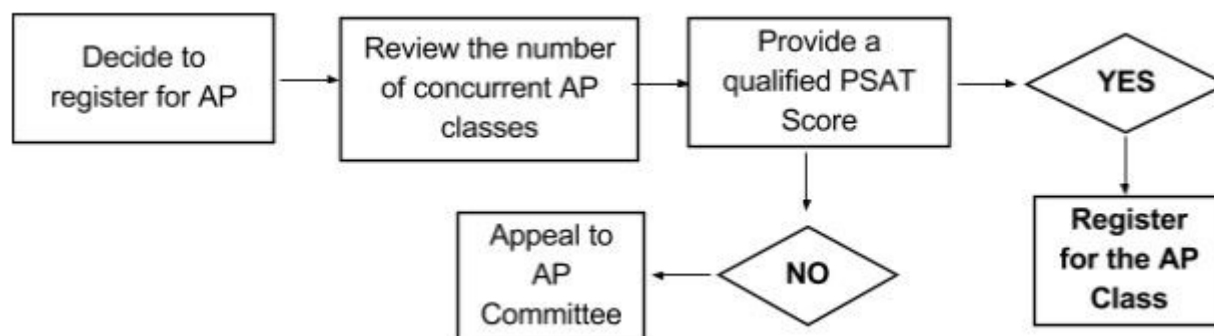
Students have the right to appeal enrollment decisions to the campus AAP Committee (Advanced Academics Placement Committee).

### [AP/Dual/Honors Course \(s\) Appeal Form](#)

**If a student is not college ready at any grade level, she/he cannot be enrolled in an AP course. (The committee might exclude 9th graders).** AP Committee should consider the following factors when reviewing appeals or making enrollment guideline modifications:

- AP Potential-PSAT
- SAT/TSI/ACT and Other Test Data
- Teacher Recommendation
- Previous AP Course Experience
- AP Exam Scores
- Student GPA

The following flowchart summarizes the AP Enrollment Phase 1:



# Advancement Placement (AP) Courses

# Enrollment Approval Policy

HSI-Sugar Land | 2021-2022

## Phase 2: Summer Assignment Completion, AP Contract and Final Approval

The final AP course approval decision will be approved based on the following factors:

- Completion of the summer assignment
- Signing of the [Advanced Placement \(AP\) Student Contract](#)

Any student who failed in any of them above will be removed from the AP course. The following flowchart summarizes the AP Enrollment Phase 2:

