



HSI-Sugar Land



Course Selection

Parent Info Night
2022-2023



Agenda Items

- HSI-Sugar Land CC Counseling Team
- HS Graduation Credit Requirements
- Top 10% Rule
- Choosing Courses for Next Year
- Course Selection Timeline
- Course Verifications & Schedule Changes
- Schedule a Meeting with Your Counselor

HSI-Sugar Land CC Counseling Team Presentation



Mr. Morgan

wmorgan@harmonytx.org

Dean of College & Career



Ms. Abbasey

nabbasey@harmonytx.org

Alpha-Split

8th: A-At
9th: A-Ba
10th: Bi-Ej
11th: Am-Ce
12th: Cb-Gi



Ms. Agdeniz

hagdeniz@harmonytx.org

Alpha-Split

8th: Au-Ga
9th: Bb-Gr
10th: A-Ag,
Pf-Se
11th: Or-Si
12th: AN-Ca



Ms. Alushi

alushi@harmonytx.org

Alpha-Split

8th: Gb-Ke
9th: Gs-Kh
10th: Ah-Bh
11th: Cf-Ga
12th: Mj-Na,
Sb-Su



Mr. Fatih

ffatih@harmonytx.org

Alpha-Split

8th: Kf-Ma
9th: Ki-Ma
10th: Kb-Me
11th: A-Al
12th: A-Am



Mrs. Kose

skose@harmonytx.org

Alpha-Split

8th: Mb-Pa
9th: Mb-Or
10th: Ek-Ka
11th: Gb-Kh
12th: Gj-Mi



Ms. Mayorga

gianina.mayorga@harmonytx.org

Alpha-Split

8th: Pb-Su
9th: Os-Se
10th: Sh-Za
11th: Sj-Z
12th: Sv-Z



Mrs. Richardson

jrichardson@harmonytx.org

Alpha-Split

8th: Sv-Z
9th: Sf-Z
10th: Mf-Pe
11th: Ki-Op
12th: Nb-Sa



Mrs. Andagul

aandagul@harmonytx.org

Seminar
Adviser



Mrs. Jenkins

milinda.jenkins@harmonytx.org

Administrative
Assistant



1. HS Graduation Requirements

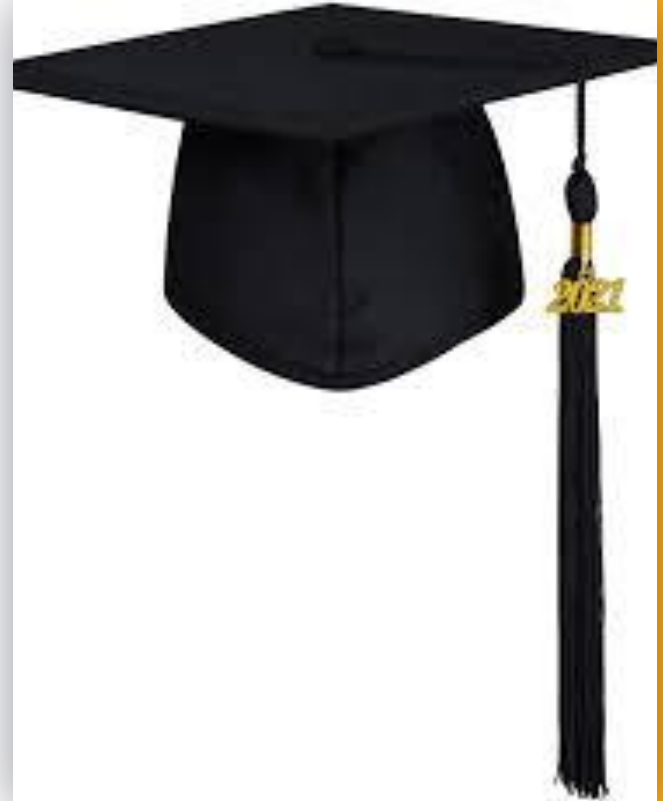


Course Selection Parent Info Night 2022-2023

HPS HS Graduation Requirements (Kose)

In order for a student to graduate from Harmony Public Schools, the student must fulfill:

1. HPS High School Credit [Requirement](#) (26)
2. Passing Score on Texas State Assessments ([STAAR](#))
3. Admission by a 4-Year College
4. Completion of a Free Application for Federal Student Aid (**FAFSA**) or a Texas Application for State Financial Aid (**TASFA**), or an opt-out form
5. Minimum 100 Community Service Hours





2. Top 10% Rule in Texas



Course Selection Parent Info Night 2022-2023





Top 10% Rule (Richardson)

- The “Top 10 Percent Law” is the common name for [Texas House Bill 588](#), the state law passed in 1997 that guarantees Texas students who graduated in the top ten percent of their high school class automatic admission to all state-funded universities.
- Lawmakers approved a **unique** implementation of the law for **UT Austin** under Senate Bill 175 passed in May 2009. Under this law, 75 percent of the first-year in-state students must be automatically admitted



Top 10% Rule (Cont..)

- Texas students who graduated in the top ten percent of their high school class automatic admission to all state-funded universities. ([Texas House Bill 588.](#))
- **Unique** implementation of the law for **UT Austin** under Senate Bill 175 passed in May 2009.
- The University has determined that it will automatically admit all eligible summer/fall 2023 and spring 2024 freshman applicants who rank within the top 6% of their high school graduating classes

Requirements to Qualify for Automatic Admission

- Complete the FHSP + Endorsement, including the **Distinguished** Level of Achievement,
- Earn a satisfactory **ACT** or **SAT** score,
- Submit the application **before** the college or university's **deadline**, and
- Provide a **final high school transcript** verifying completion of the FHSP + Endorsement, including the Distinguished Level of Achievement.





3. Choosing Courses for Next Year



Course Selection Parent Info Night 2022-2023





HSI-Sugar Land CC Website

Advanced Placement (AP) Policy Change Courses (Fatih)

- PSAT-TSI-Grade Criteria (Previously)
- **Now**!!!! AP and Honors courses are open to all students with the prerequisite coursework
- **The purpose** of establishing enrollment guidelines is to make sure that all willing, motivated and academically prepared students are strategically placed into AP classes
-

Recommendations (Abbasey)

Test Results

Eligibility Criteria to Enroll in Advanced Courses

- PSAT
- NWEA
- TSI

Current Grades

Straight A's for All Courses especially in all Core Subjects

- Math
- English
- Science
- Social Studies

Teacher Rec. Letters

Teacher rating based on preparation for class, classwork, self advocacy and independence as a learner

Choosing Courses (Abbasey)

Steps on Course Selection

- Review and choose your **endorsement**. ([Course Catalog](#))
- Discuss the Courses with Parents
- Set Up Your Meeting with a Counselor
 - [9th-10th Grade](#)
 - [11th Grade](#)
- Choose courses from the required subject areas:
English • Math • Science • Social Studies
- Choose courses from other areas to fill all **6-7-8** class periods. (See Your Counselor)
- Submit Correction Form If Needed



Choosing Courses (Cont..)

- Students must be mindful of their endorsement requirements.
- Review the course catalog when making selections.
- [Enter course requests in Family Access Center](#)
- Course selection requests input window will
 - **Open** Monday, January 24th, at 7:30 am
 - **Close** Wednesday, March 9th, at 4:00 pm
- The student will meet to review credits and finalize course requests with the school counselor.





NOW!!!

**Schedule
Your
Meeting**

SCAN ME





4. Course Selection Timeline



Course Selection Parent Info Night 2022-2023



Course Selection Timeline (Alushi)

Submit Dual credit Forms

Start: Monday, JANUARY 24th, 2022
Finish: Friday, MARCH 11th, 2022

Complete your meeting with your counselor

1 **Start:** Monday, JANUARY 24th, 2022
Finish: Wednesday, MARCH 09th, 2022

Submit Schedule Corrections

3 **Start:** Friday, APRIL 29th, 2022
Finish: Saturday, MAY 07th, 2022





5. Course Verifications & Schedule Corrections



Course Selection Parent Info Night 2022-2023



Course Verifications & Schedule Corrections (Mayorga)

Course verification is the time to make changes to the course requests.

Changes requested after the Course Plan has been submitted will be made only for the following reasons per counselor approval:

- A Senior needs to make up deficient graduation credits
- A student received a failing grade and needs to repeat the class for high school graduation requirements or to meet college eligibility requirements
- A student is in the incorrect course level
- A course requested will not be offered due to budgetary restraints, low-class size
- A student completed a course credit at summer school
- Medical/health issues require adjustment in schedule
- There is a missing or blank course in the schedule.



Thanks!

Any questions?



In two or three columns

Yellow

Is the color of gold, butter and ripe lemons. In the spectrum of visible light, yellow is found between green and orange.

Blue

Is the colour of the clear sky and the deep sea. It is located between violet and green on the optical spectrum.

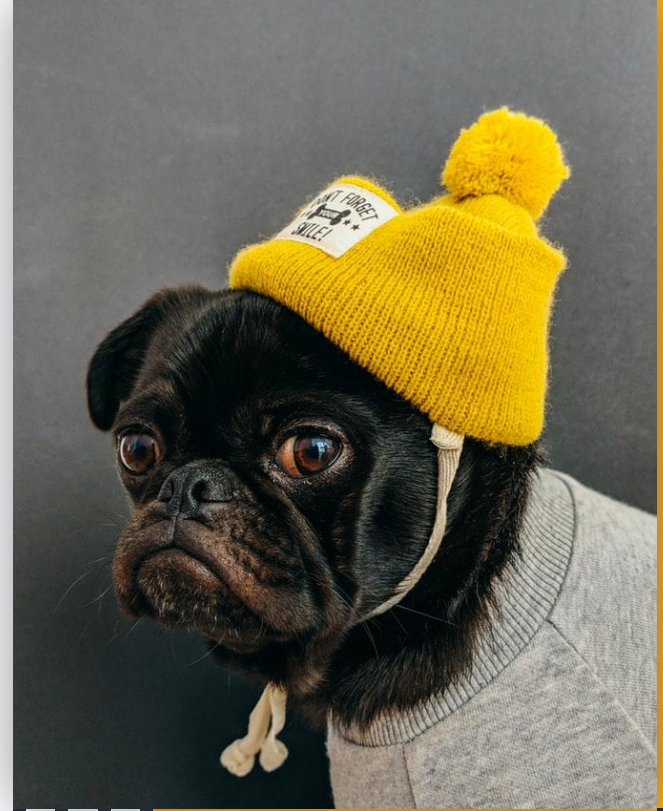
Red

Is the color of blood, and because of this it has historically been associated with sacrifice, danger and courage.



A picture is worth a thousand words

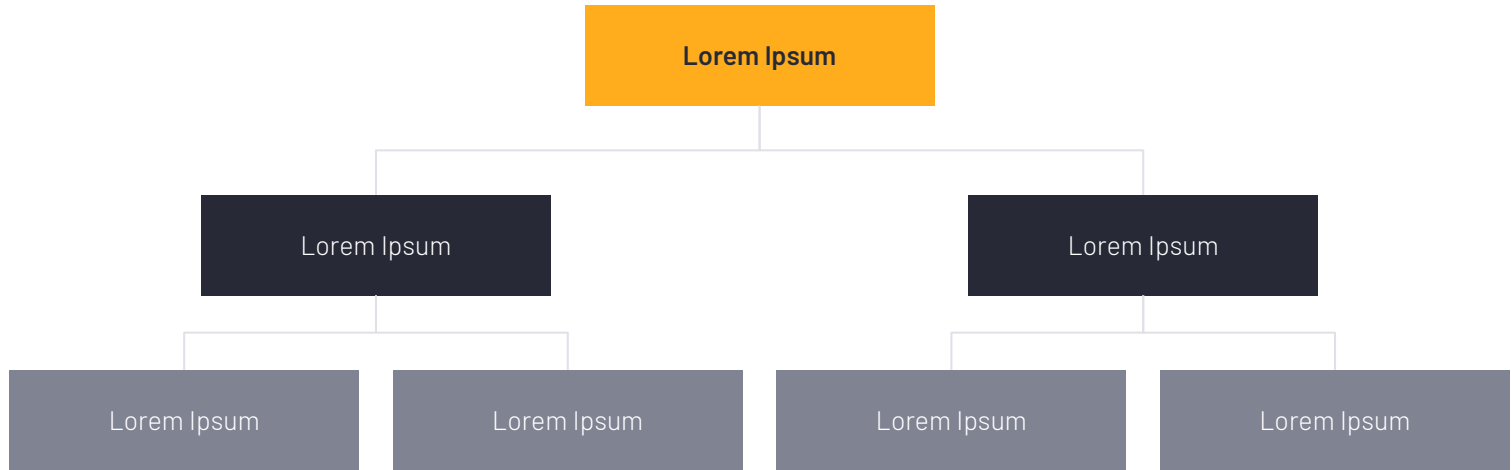
A complex idea can be conveyed with just a single still image, namely making it possible to absorb large amounts of data quickly.



**Want big impact?
Use big image.**



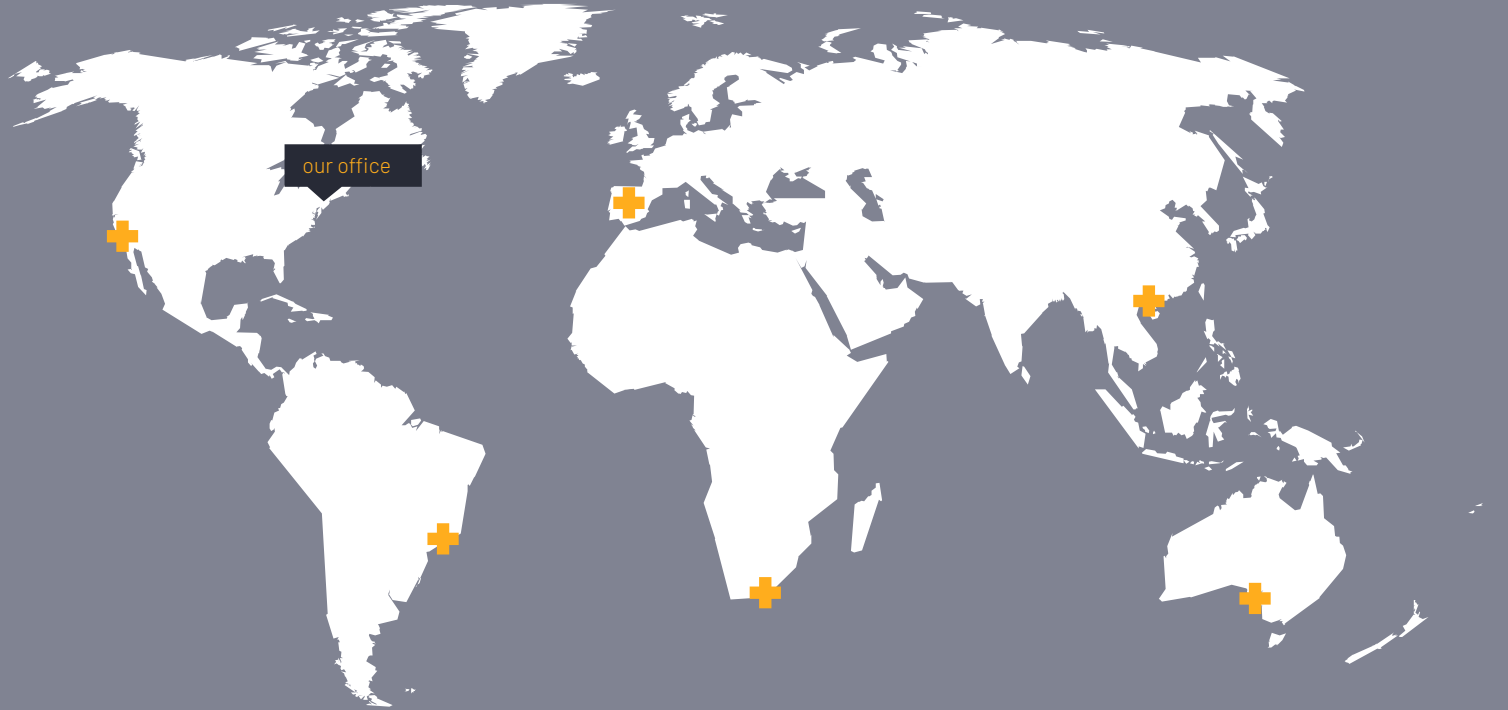
Use diagrams to explain your ideas



And tables to compare data

	A	B	C
Yellow	10	20	7
Blue	30	15	10
Orange	5	24	16

Maps





89,526,124

Whoa! That's a big number, aren't you proud?





89,526,124\$

That's a lot of money

185,244 users

And a lot of users

100%

Total success!

Let's review some concepts

Yellow

Is the color of gold, butter and ripe lemons. In the spectrum of visible light, yellow is found between green and orange.

Yellow

Is the color of gold, butter and ripe lemons. In the spectrum of visible light, yellow is found between green and orange.

Blue

Is the colour of the clear sky and the deep sea. It is located between violet and green on the optical spectrum.

Blue

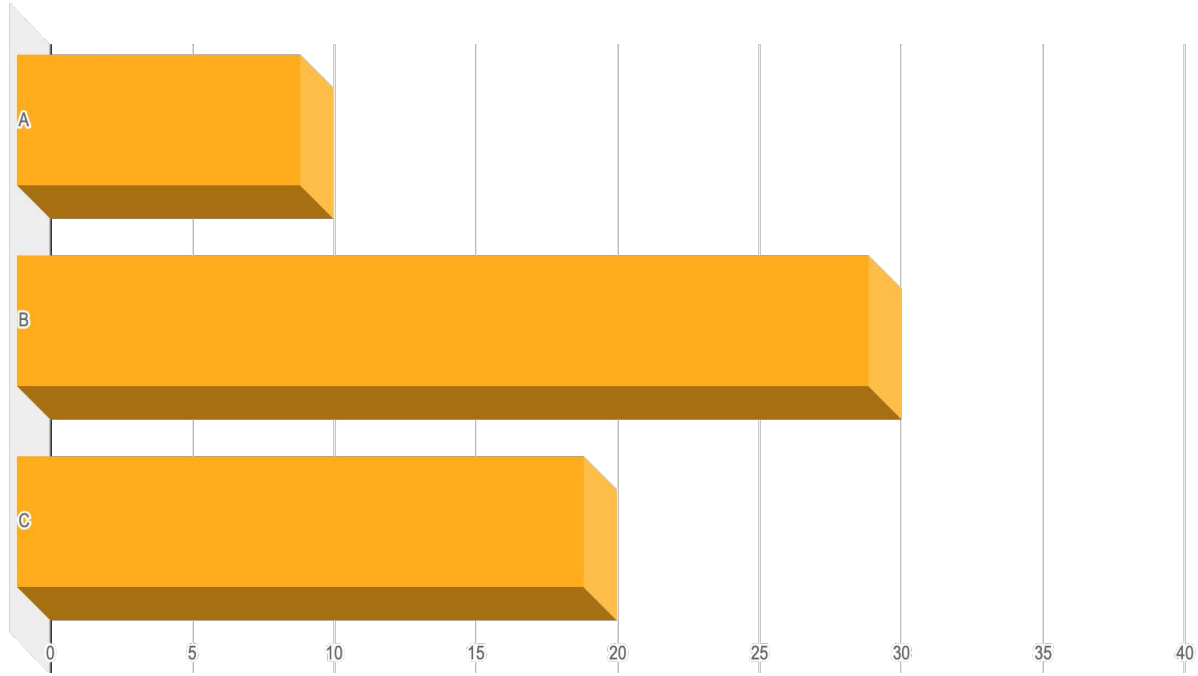
Is the colour of the clear sky and the deep sea. It is located between violet and green on the optical spectrum.

Red

Is the color of blood, and because of this it has historically been associated with sacrifice, danger and courage.

Red

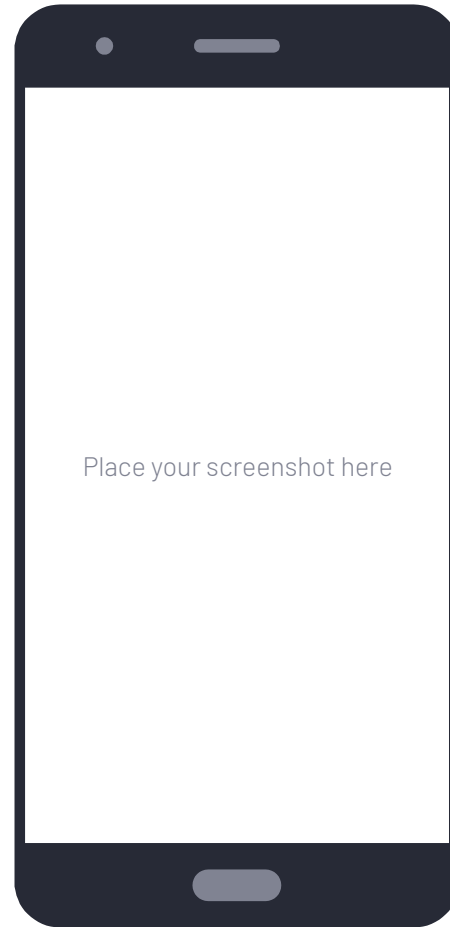
Is the color of blood, and because of this it has historically been associated with sacrifice, danger and courage.



You can insert graphs from Excel or Google Sheets

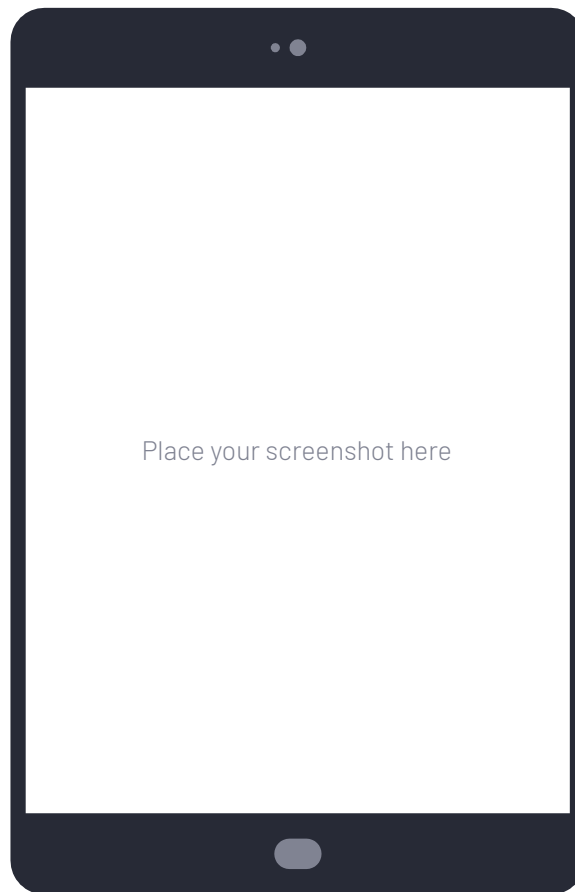
Mobile project

Show and explain your web, app or software projects using these gadget templates.



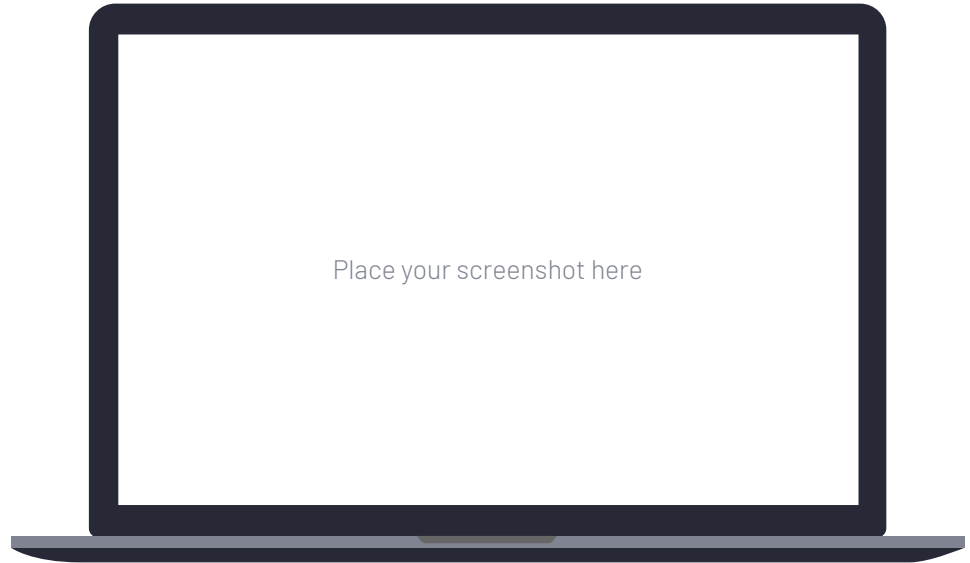
Tablet project

Show and explain your web, app or software projects using these gadget templates.



Desktop project

Show and explain your web, app or software projects using these gadget templates.



Credits

Special thanks to all the people who made and released these awesome resources for free:

- Presentation template by SlidesCarnival
- Photographs by Unsplash



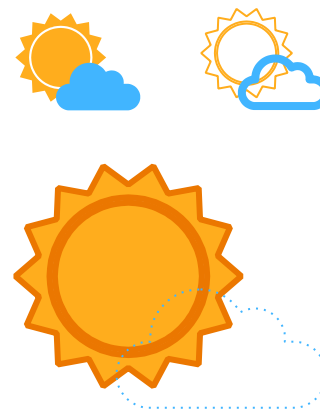
SlidesCarnival icons are editable shapes.

This means that you can:

- Resize them without losing quality.
- Change fill color and opacity.
- Change line color, width and style.

Isn't that nice? :)

Examples:



Find more icons at
slidescarnival.com/extra-free-resources-icons-and-maps

Presentation design

This presentation uses the following typographies:

- Titles: Barlow Semibold
- Body copy: Barlow Light

Download for free at:

<https://www.fontsquirrel.com/fonts/barlow>

You don't need to keep this slide in your presentation. It's only here to serve you as a design guide if you need to create new slides or download the fonts to edit the presentation in PowerPoint®



You can also use any emoji as an icon!
And of course it resizes without losing quality.

How? Follow Google instructions

<https://twitter.com/googledocs/status/730087240156643328>



many more...



Free templates for all your presentation needs



For PowerPoint and
Google Slides



100% free for personal
or commercial use



Ready to use,
professional and
customizable



Blow your audience
away with attractive
visuals

